

## Domestic Regulators

### Overview

Utility Solutions Group residential service regulators have a sleek, modern design and rugged construction, offering greater dependability, precise pressure control and outstanding performance. The 4-inch roll-out style diaphragm 496 and 6-inch diaphragm 143-80 are designed to be installed in numerous mounting positions and are simple to adjust and service. The union nut style connection of the 143-80 makes it especially easy to install and maintain.

### Applications

Our family of service regulators is designed and built for domestic gas service, in addition to some commercial and industrial applications, such as burners, furnaces, ovens, heaters, gas engines, etc. Although mainly used with natural gas, they perform equally well when used with LPG vapor, air, dry CO<sub>2</sub>, nitrogen and other non-corrosive gases. Operating temperatures range from -20° to +150°F. Models 496 and 143-80 service regulators are not recommended for buried service.

### Variations

#### Model 143-80 Variations

- Standard regulator (-1)
- Regulator with internal relief valve (IRV) (-2)
- Regulator with low pressure cut-off and IRV (-6)
- Pipe sizes: 3/4", 1" or 1 1/4"
- Straight body only
- Seven springs available to provide outlet pressure ranges from 3 1/2" w.c. (inches water column) to 6 psi (pounds per square inch)

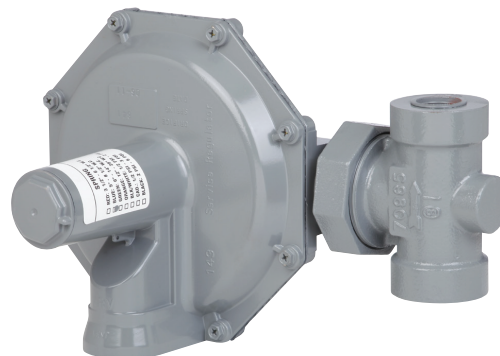
#### Model 496 Variations

- Angled body (Model -10) or straight body (Model -20)
- Variable mounting positions
- Internal relief valve (IRV) comes standard
- Pipe sizes: 3/8" \*, 1/2" \*, 3/4" or 1"
- Five springs available to provide five different outlet pressure ranges from 4" w.c. to 2 psi

\* Straight body only

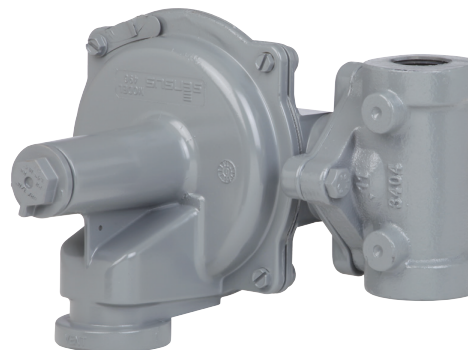
#### Model 143-80

- Max. Inlet Pressure – 125 psi
- Max. Outlet Pressure – 6 psi
- Max. Capacity – 2,400 SCFH



#### Model 496

- Max. Inlet Pressure – 125 psi
- Max. Outlet Pressure – 2 psi
- Max. Capacity – 2,250 SCFH



### Regulator Models

Basic Models	Description	High Pressure Models
496	Regulator with Internal Relief Valve (IRV)	N/A
143-80-1	Standard Regulator	N/A
143-80-2	Regulator with Internal Relief Valve (IRV)	143-80-2 HP
143-80-6	Regulator with IRV and Low Pressure Cut-Off (LPCO)	N/A

### Dimensions, Specifications and Connections

Regulator	Model	Working Pressure (psi)		Capacity (SCFH)	Height		Dimensions (Inches) Width		Depth		Shipping Weight (Lbs.)
		Min.	Max.		Min.	Max.	Min.	Max.	Min.	Max.	
496	10, 20	1.0	125	2,250	7.2	7.2	8.3	8.8	5.7	5.7	4.1
143-80	1, 2, 2 HP	0.5	125	2,400	7.7	8.4	10.43	10.7	6.9	6.9	5.5
	6	0.5	60	2,300							